



HN75WR80U

75" ADVANCED INTERACTIVE DISPLAY

Hisense Interactive Digital Display's deliver unrivalled performance and value. They combine the power of a digital display, tablet, electronic whiteboard and video conference device to deliver the ultimate all-in-one display solution. Interactive Digital Boards (65"/75"/86") have been designed to facilitate market leading knowledge sharing in both business and educational environments. They are touch enabled and have multiple users them at once to present, illustrate and share information.



Highlights



Smooth Touch

The built-in whiteboard app allows users to smoothly write, draw and erase information on-screen through touch, either by hand or with a stylus pen.



Accurate as analog

The IR software precisely recognizes touch points as little as 2 mm making it as accurate as the experience of writing with pen and paper.



Collaborative interaction

The touchscreen recognises up to 20 touches at once which is ideal for simultaneous use by meeting participants.



Intuitive controls

With your fingers you will, among other things, be able to switch between tasks, annotate content from any source, make handwritten notes, zoom in / out and undo changes.



Smooth and speedy processing

The open Android 8.0 platform not only guarantees smooth processing, but also supports the installation of Android-based application.



Powerful Architecture

Expect unstoppable performance by an octa-core processor and 3+32GB large memory.



Comfortable viewing

Each of our Interactive Digital Boards has a filter to effectively reduce blue light so your eyes remain comfortable even when using the screen for longer periods of time.



Immersive Sound

Thanks to embedded dual-channel Dolby sound the Hisense WR series will give their users and audiences a cinematic audio-visual experience.



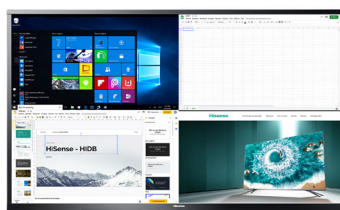
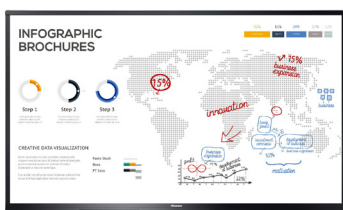
Tempered Glass

Hisense's WR series have heat treated tempered glass preventing any damage to the touch panels.



Anti-Glare

Optical technology diffuses mirror-like reflections and bright lights to help keep what's on your screen clear and visible.



Specifications

Interactive Display Panel

| | |
|----------------------|-----------------------------|
| LCD Size | 75" |
| Backlight Type | D-LED |
| Resolution | 3840x2160(pixels) |
| Brightness | 400cd/m ² (typ.) |
| Contrast Ratio | 1200:1(typ.) |
| Response Time | 8ms (typ.) |
| Refreshing Frequency | 60Hz |
| Viewing Angle | 178°(H) / 178°(V) |
| Life Time | 30,000 hrs (min.) |
| Color Gamut(X% NTSC) | 72% |
| Display Colors | 1.07B(10bit) |

System

| | |
|----------|--|
| OS | Android 8.0 |
| Language | Chinese/English/German/French/Italian /Spanish/Thai/Indonesian |

Speaker

| | |
|--------------------|----------|
| Audio Output Power | 2x15W/8Ω |
|--------------------|----------|

Connectivity

| | |
|--------|--|
| Input | HDMI IN x 2 DP IN x 1 VGA IN x 1 OPS(optional) x1 LAN x 1 USB x 4 Touch x 1 PC-Audio IN x 1 RS232 IN x 1 |
| Output | HDMI OUT x 1 S/PDIF OUT x 1 |

Power

| | |
|-------------------------------|----------------------------|
| Power Requirements | AC 100 V ~ 240 V, 50/60 Hz |
| Power Consumption Without OPS | 240W |

Touch

| | |
|----------------------|----------------------|
| Sensing Type | Infrared Touch Frame |
| Surface Protection | 4mm Anti-Glare Glass |
| Infrared Touch | ≤20 points |
| Touch Accuracy | 90%(±1mm) |
| Response Time | ≤8ms |
| Minimum Touch Object | ≥2mm |

Certification

| | |
|------------------------|---------------|
| Standard Certification | CB,CE,ICASA |
| EAN | 6942147457115 |



Physical

| | |
|--------------------------|-----------------------|
| Housing Color | Black |
| Product Size (W x H x D) | 1720 x 1048 x 105mm |
| Package Size (W x H x D) | 1885 x 1218 x 300mm |
| Net Weight | 52kg |
| Packed Weight | 68kg |
| VESA | 600x400mm, 4-M8 screw |

Optional

| | |
|-------|--------------------|
| Basic | Mobile Cart OPS |
|-------|--------------------|

What's in the box

| | |
|-------|--|
| Basic | User manual Pen x 2 Remote Control Hanging Wheel x 4 Wireless Cast Power Cable Battery x 2 Wall Mount Bracket |
|-------|--|

Dimensions

75" 1720 x 1048 x 105mm
52 kg

